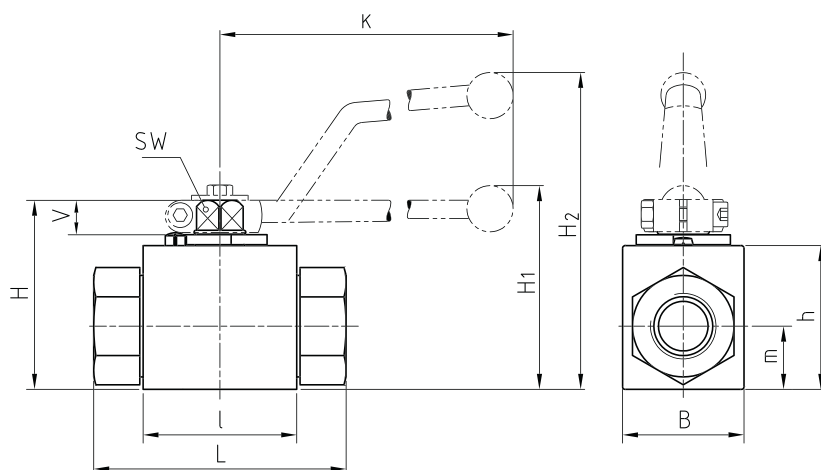
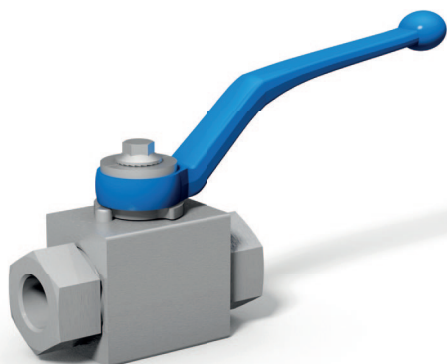


2-way ball valve Stainless Steel

BKH / BKHP420



AVAILABLE SIZES

DN4 - DN25 (1/8" to 1")

CONNECTIONS

DIN ISO 228 Female thread, ANSI B1.20.1 NPT Female thread, DIN 2353/ISO 8434-1 Light / Heavy series, SAE J 514/ISO/DIS11926-1 Female thread, ISO 7/1 Rc Female thread, ISO 8434-3 ORFS Male thread, others on request

ACCESSORIES ON REQUEST

- Locking devices page 226 - 229
- Actuators 224 - 225
- Mounting holes 21
- Position switches 232 - 233
- Combinations 188 - 190
- Detent on request

MATERIAL CODE DESCRIPTION

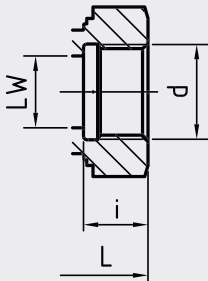
Materials	442A	4428
Body	Stainless Steel	Stainless Steel
Ball	Stainless Steel	Stainless Steel
Stem	Stainless Steel	Stainless Steel
Ball seats	POM	POM
O-rings	NBR	FPM
Tmin / Tmax	-30°C / 100°C	-20°C / 100°C

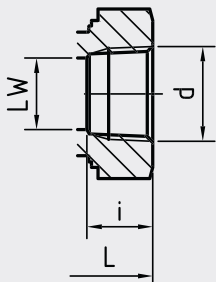
GENERAL DIMENSIONS

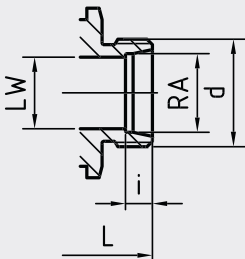
Type	L	B	H	h	m	V	SW	K	H ₁	H ₂	Lever
BKH-DN4	40	26	47	33	13,5	11	9	115	-	82	Zn
BKH-DN6	40	26	47	33	13,5	11	9	115	-	82	Zn
BKH-DN8	40	26	47	33	13,5	11	9	115	-	82	Zn
BKH-DN10	43	32	52	38	17,5	11	9	115	-	86	Zn
BKH-DN13	48	35	54	40	19	11	9	115	-	89	Zn
BKH-DN16	48	38	63	46	19	13	12	160	-	106	Al
BKH-DN20	62	49	75	57	24,5	14	14	200	79	-	Zn
BKHP420-DN20	82	58	83	65	32,5	14	14	200	87	-	Zn
BKH-DN25	66	58	83	65	29,5	14	14	200	87	-	Zn
BKHP420-DN25	84	70	88	70	34,5	14	14	200	92	-	Zn
BKH-DN25/32	66	58	83	65	29,5	14	14	200	87	-	Zn
BKH-DN25/40	66	58	83	65	29,5	14	14	200	87	-	Zn

2-way ball valve Stainless Steel

BKH / BKHP420

CONNECTION TYPE	DIMENSIONS						ORDER CODE PER MATERIAL COMBINATION		
DIN ISO 228 FEMALE THREAD	Type	LW	L	i	d	Weight [Kg]	PN [bar]	442A	4428
	BKH-DN4-G1/8	5	69	10	G1/8	0,41	500	29754*	30422*
	BKH-DN6-G1/4	6	69	14	G1/4	0,40	500	27183*	26726*
	BKH-DN10-G3/8	10	72	14	G3/8	0,54	500	27261*	27180*
	BKH-DN13-G1/2	13	83	16,3	G1/2	0,65	500	27260*	27182*
	BKH-DN16-G5/8	15	83	16	G5/8	0,70	400	32270*	31558*
	BKH-DN20-G3/4	20	95	18	G3/4	1,50	315	27657*	27817*
	BKHP420-DN20-G3/4	20	107	18	G3/4	2,57	420	50143	53461
	BKH-DN25-G1	25	113	20	G1	2,20	315	27026*	27673*
	BKHP420-DN25-G1	25	131	20	G1	3,94	420	50144	53462
	BKH-DN25/32-G1 1/4	25	120	22	G1 1/4	2,30	315	27438*	34869*
BKH-DN25/40-G1 1/2	25	130	24	G1 1/2	2,60	250	33223*	35476*	

ANSI B1.20.1 NPT FEMALE THREAD	Type	LW	L	i	d	Weight [Kg]	PN [bar]	442A	4428
	BKH-DN4-1/8"NPT	5	69	10,5	1/8"NPT	0,30	500	37169*	37170*
	BKH-DN6-1/4"NPT	6	69	13,7	1/4"NPT	0,40	500	28387*	27369*
	BKH-DN10-3/8"NPT	10	72	13,5	3/8"NPT	0,55	500	28388*	28750*
	BKH-DN13-1/2"NPT	13	83	17	1/2"NPT	0,75	500	41318*	27803*
	BKH-DN20-3/4"NPT	20	95	18,3	3/4"NPT	1,63	315	29237*	27429*
	BKHP420-DN20-3/4"NPT	20	107	18,3	3/4"NPT	2,60	420	53463	53464
	BKH-DN25-1"NPT	25	113	21,6	1"NPT	2,30	315	26996*	28451*
	BKHP420-DN25-1"NPT	25	131	21,6	1"NPT	4,00	420	53465	53466
	BKH-DN25/32-1 1/4"NPT	25	120	22,1	1 1/4"NPT	2,51	315	37168*	37171*
	BKH-DN25/40-1 1/2"NPT	25	130	22,1	1 1/2"NPT	2,70	250	37767*	37768*

DIN 2353 / ISO 8434-1 LIGHT SERIES	Type	LW	RA	L	i	d	Weight [Kg]	PN [bar]	442A	4428
	BKH-DN4-6L	5	6	67	7	M 12x1,5	0,36	500	26268*	28589*
	BKH-DN6-8L	6	8	67	7	M 14x1,5	0,37	500	27342*	27381*
	BKH-DN8-10L	8	10	74	7	M 16x1,5	0,38	500	34754*	27380*
	BKH-DN10-12L	10	12	74	7	M 18x1,5	0,50	500	26263*	27388*
	BKH-DN13-15L	13	15	82	7	M 22x1,5	0,61	500	34673*	27658*
	BKH-DN13-18L	13	18	82	7,5	M 26x1,5	0,60	500	33220*	28732*
	BKH-DN16-18L	15	18	82	7,5	M 26x1,5	0,75	400	31293*	29097*
	BKH-DN20-22L	20	22	101	7,5	M 30x2	1,49	315	32346*	27965*
	BKH-DN25-28L	25	28	108	7,5	M 36x2	2,00	315	28322*	37164*
	BKH-DN25/32-35L	25	35	112	10,5	M 45x2	2,12	315	33221*	32289*
	BKH-DN25/40-42L	25	42	112	11	M 52x2	2,27	315	37765*	37766*

Please note the pressure ratings of the tube connections!

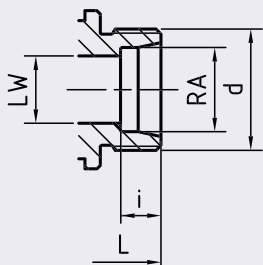
*Article usually in stock.

2-way ball valve Stainless Steel

BKH / BKHP420

CONNECTION TYPE

DIN 2353 / ISO 8434-1
HEAVY SERIES



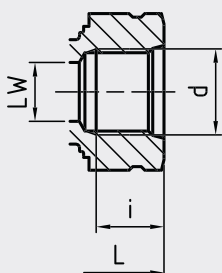
DIMENSIONS

Type	LW	RA	L	i	d	Weight [Kg]
BKH-DN4-8S	5	8	73	7	M 16x1,5	0,38
BKH-DN6-10S	6	10	73	7,5	M 18x1,5	0,39
BKH-DN8-12S	8	12	76	7,5	M 20x1,5	0,39
BKH-DN10-14S	10	14	80	8	M 22x1,5	0,50
BKH-DN13-16S	13	16	86	8,5	M 24x1,5	0,60
BKH-DN13-20S	13	20	90	10,5	M 30x2	0,60
BKH-DN16-20S	15	20	90	10,5	M 30x2	0,80
BKH-DN20-25S	20	25	109	12	M 36x2	1,55
BKHP420-DN20-25S	20	25	129	12	M 36x2	2,52
BKH-DN25-30S	25	30	120	13,5	M 42x2	2,10
BKHP420-DN25-30S	25	30	138	13,5	M 42x2	4,00
BKH-DN25/32-38S	25	38	124	16	M 52x2	2,30

ORDER CODE PER MATERIAL COMBINATION

PN [bar]	442A	4428
500	28455*	27378*
500	32334*	32837*
500	27887*	29803*
500	28011*	30738*
500	27599*	28494*
500	27598*	28207*
400	29971*	29173*
315	27365*	28751*
420	53467	53468
315	27015*	35233*
420	53469	53470
315	27178*	32570*

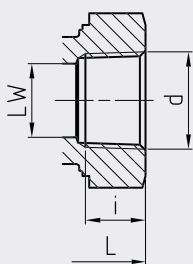
SAE J514/ISO/DIS11926-1 FEMALE THREAD



Type	LW	L	i	d	Weight [Kg]
BKH-DN6-7/16" UNF	5	69	12	7/16"-20 UNF	0,39
BKH-DN10-9/16" UNF	10	72	13	9/16"-18 UNF	0,50
BKH-DN13-3/4" UNF	13	83	15	3/4"-16 UNF	0,60
BKH-DN20-1 1/16" UN	20	95	20	1 1/16"-12 UN	1,55
BKHP420-DN20-1 1/16" UN	20	108	20	1 1/16"-12 UN	2,55
BKH-DN25-1 5/16" UN	25	113	20	1 5/16"-12 UN	2,10
BKHP420-DN25-1 5/16" UN	25	131	20	1 5/16"-12 UN	4,00

PN [bar]	442A	4428
500	37174*	37179*
500	37175*	37180*
500	37176*	37181*
315	37177*	37182*
420	53471	53472
315	37178*	37183*
420	53473	53474

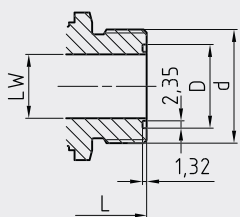
ISO 7/1 Rc FEMALE THREAD



Type	LW	L	i	d	Weight [Kg]
BKH-DN4-Rc 1/8"	5	69	7,4	Rc 1/8"	0,40
BKH-DN6-Rc 1/4"	6	69	11	Rc 1/4"	0,39
BKH-DN10-Rc 3/8"	10	72	11,4	Rc 3/8"	0,55
BKH-DN13-Rc 1/2"	13	83	15	Rc 1/2"	0,64
BKH-DN20-Rc 3/4"	20	95	16,3	Rc 3/4"	1,59
BKHP420-DN20-Rc 3/4"	20	107	16,3	Rc 3/4"	2,57
BKH-DN25-Rc 1"	25	113	19	Rc 1"	2,20
BKHP420-DN25-Rc 1"	25	131	19	Rc 1"	3,94
BKH-DN25/32-Rc 1 1/4"	25	120	21,4	Rc 1 1/4"	2,30

PN [bar]	442A	4428
500	59582	59583
500	29014	59584
500	29015	40400
500	29016	59585
315	29017	57551
420	59586	59587
315	29018	46686
420	59588	59589
315	29019	59590

ISO 8434-3 ORFS MALE THREAD



Type	LW	L	D	d	O-ring**	Weight [Kg]	PN [bar]	442A	4428
BKH-DN6					on request				
BKH-DN8-11/16" UN ISO8434-3	6,5	73	12,6	11/16"-16 UN	9,25 x 1,78	0,40	500	on request	
BKH-DN10-13/16" UN ISO8434-3	9,5	80	15,77	13/16"-16 UN	12,42 x 1,78	0,50	500	on request	
BKH-DN13-1" UNS ISO8434-3	12,5	90	19	1-14" UNS	15,6 x 1,78	0,60	400	on request	
BKH-DN16-1 3/16" UN ISO8434-3	15	98	22,17	1 3/16"-12 UN	18,77 x 1,78	0,80	400	on request	
BKH-DN20-1 7/16" UN ISO8434-3	20	111	26,87	1 7/16"-12 UN	23,52 x 1,78	1,60	315	on request	
BKH-DN25-1 11/16" UN ISO8434-3	25	120	33,25	1 11/16"-12 UN	29,87 x 1,78	2,10	250	on request	

Please note the pressure ratings of the tube connections!

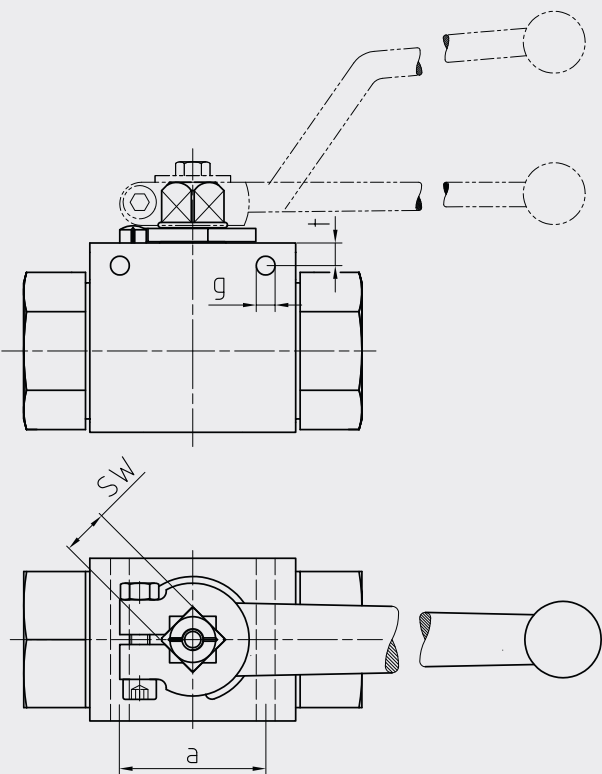
**O-ring included

*Article usually in stock.

2-way ball valve

Stainless Steel

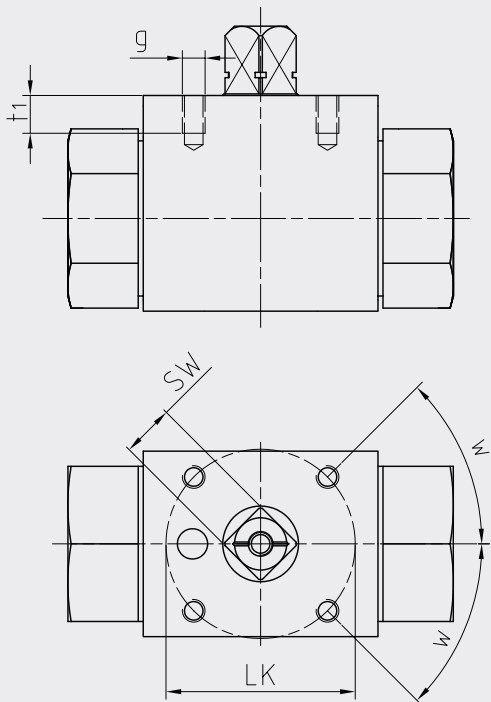
BKH / BKHP420



ASSEMBLING HOLES

DN	SW	a	g	t
4	9	31	4,3	4,5
6	9	31	4,3	4,5
10	9	32	4,3	4
13	9	32	4,3	4
16	12	32	5,2	6
20	14	44	6,2	6
25	14	44	6,3	6
25	14	44	6,3	6
25/32	14	44	6,3	6
25/40	14	44	6,3	6

Two-way



ASSEMBLING THREADS AS PER ISO 5211

DN	SW	LK	g	t ₁	w	ISO 5211
4	9	36	M5	6	30°*	(F03)*
6	9	36	M5	6	30°*	(F03)*
10	9	36	M5	7	45°	F03
13	9	36	M5	6	45°	F03
16	12	42	M5	8	45°	F04
20	14	50	M6	10	45°	F05
25	14	50	M6	10	45°	F05
25	14	50	M6	10	45°	F05
25/32	14	50	M6	10	45°	F05
25/40	14	50	M6	10	45°	F05

*30° does not correspond to ISO 5211