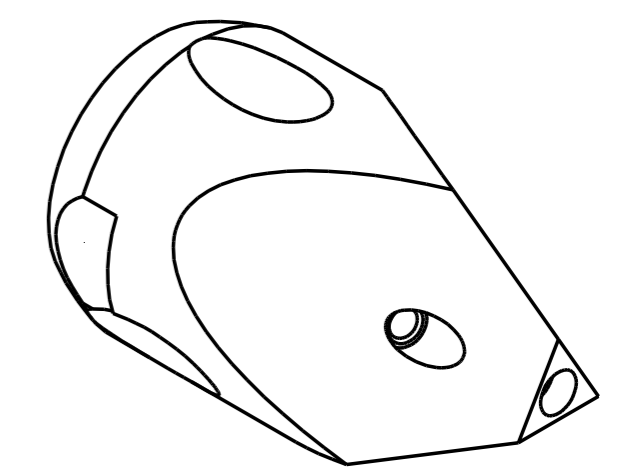
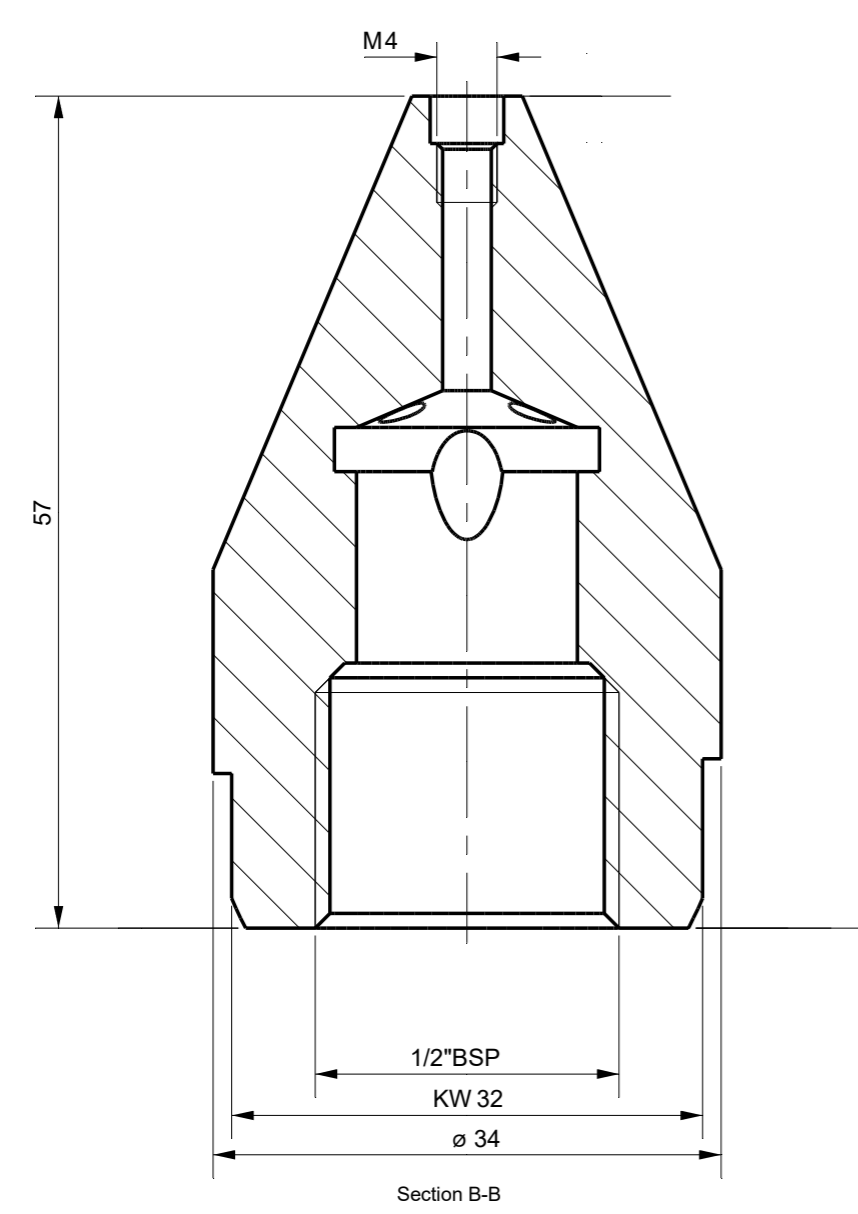


Section A-A



<b>Tolerances</b> Unless Otherwise Specified ACC. DIN-ISO 2768 -1en 2 Angular +/- 0,3° Corners <0,2x45° / R<0,2		<b>Finish</b>  					<b>Material</b>  				
		<b>Dimension (No Decimals)</b>		0 t/m 6	6 t/m 30	30 t/m 120	120 t/m 400	400 t/m 1000			
		<b>Tolerance</b>		0,1	0,2	0,3	0,5	0,8			
<b>Name</b> Drawn Checked		<b>Date</b>  		<b>Remarks</b>  					<b>Description</b> SJP Pointed Nozzle 1/2" BSPF w/o inserts		
<b>Projection</b> 		Drawing remains the property of Salomon Jetting Parts B.V.					Unit mm		Number  		<b>Project</b>  
		Salomon Jetting Parts B.V. Industriestraat 17 3291 CC Strijen www.sjpbv.com info@sjpbv.com +31 (0) 88 126 1900			<b>Size</b> A3		<b>Drawing nr.</b> 3-6160020		<b>Rev</b> A		
		<b>Scale</b> 2:1		<b>CAD File</b>  			<b>Sheet</b> 1 of 1				