

1

2

3

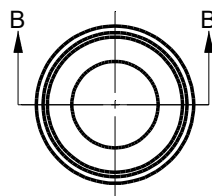
4

Rev.A

date

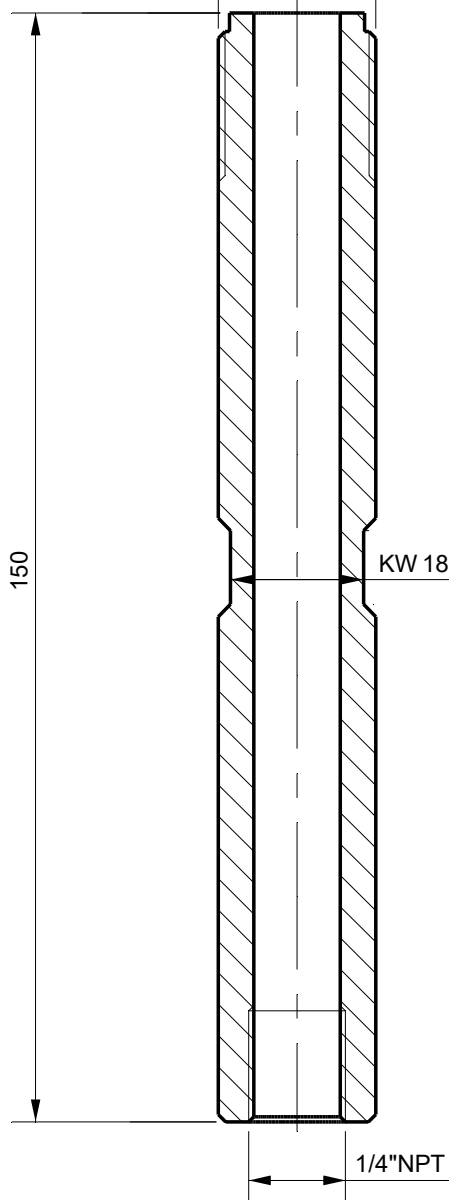
Description revision

A



B

1/2" BSP



150

KW 18

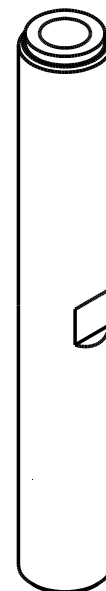
1/4" NPT

Section B-B

C

D

E



F

**Tolerances**

Unless Otherwise Specified

ACC. DIN-ISO 2768 -1and 2

Angular +/- 0,3°

Corners &lt;math&gt;&lt;0,2 \times 45^\circ / R&lt;0,2&lt;/math&gt;

**Finish**

-

**Material**

St.St. 304

**Dimension (No Decimals)**

0 t/m 6

6 t/m 30

30 t/m 120

120 t/m 400

400 t/m 1000

**Tolerance**

0,1

0,2

0,3

0,5

0,8

Name

Date

Remarks

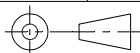
Drawn

25-7-2022

Checked

**Description**

Extension Lance  
1/4"NPTF - 1/2"BSPM Flat

**Projection**Drawing remains the property of  
Salomon Jetting Parts B.V.Unit  
mm

Number

**Project**

Salomon Jetting Parts B.V.

Industriestraat 17

3291 CC Strijen

www.sjpbv.com

info@sjpbv.com

+31 (0) 88 126 1900

Size

**A4**

Drawing nr.

**304357-150**

Rev

**A**

Scale

**1:1**

CAD File

Sheet

**1 of 1**