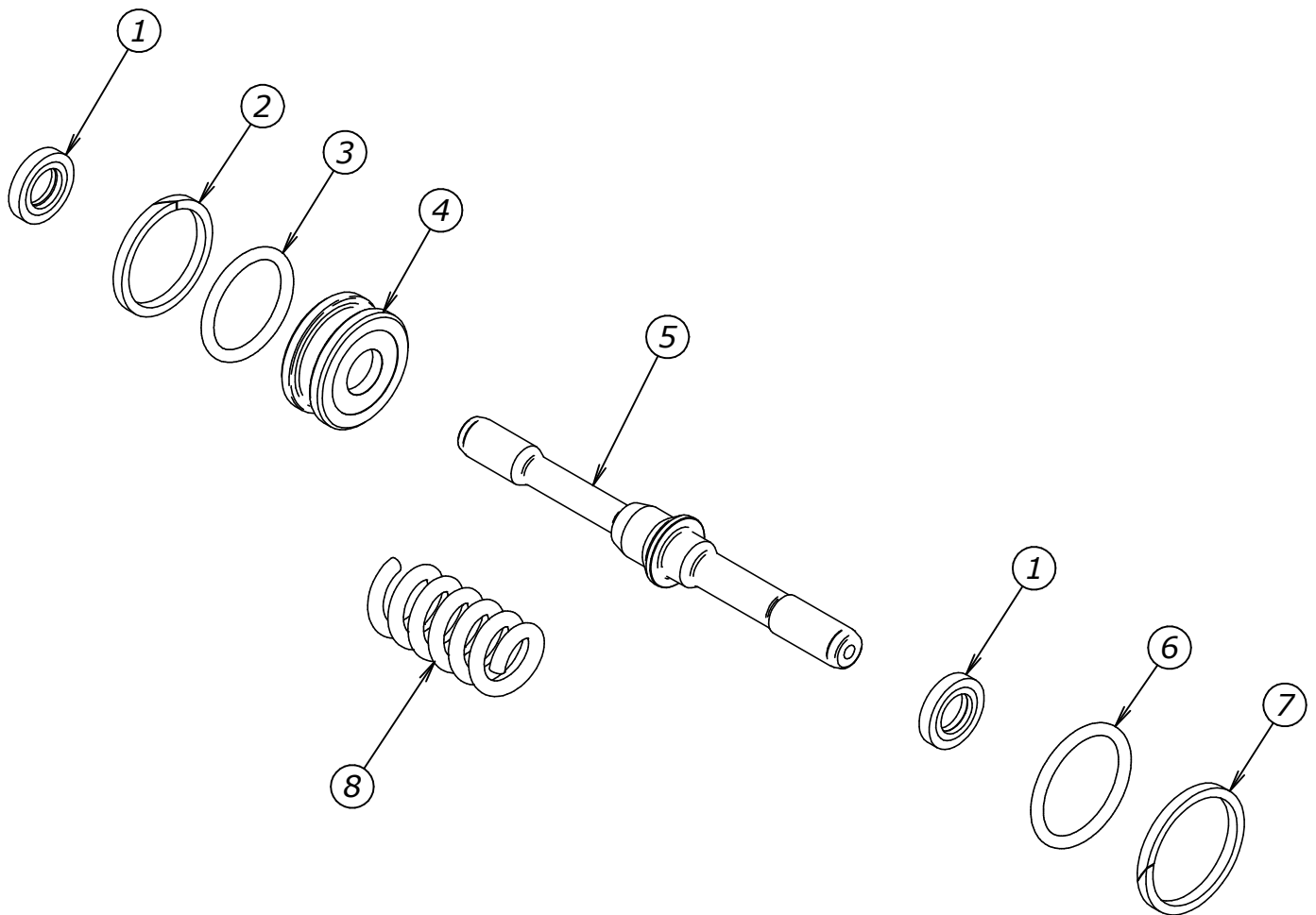


Num.	Codice	Descrizione Completa	Quant.
1	G00003003	HD SLIPPER NCR Ø6N1+N-103+OR NBR70	2
2	A00011029	A.A. 15,20X18,00X1,70 TBT	1
3	0110750253	GUOR 1.78X14 2056 NBR 90 NERO	1
4	S00301045	SEDE ML710	1
5	S02401009	STELO ML710	1
6	0110751321	GUOR 1.78X15.6 2062 NBR 90 NERO	1
7	A00011028	A.A. 16,70X19,50X1,70 TBT	1
8	M00201055	MOLLA 2,2X9,8X27,0	1



DENOMINAZIONE - TITLE

**KIT RICAMBI ML710**

CODICE CLIENTE - CUSTOMER PART NO.

VIETATO RIPRODURRE O DIVULGARE IN TOTO O IN PARTE IL PRESENTE  
DISEGNO SENZA AUTORIZZAZIONE SCRITTA DELLA TECOMECC S.p.A.

IT IS FORBIDDEN TO PARTIALLY OR TOTALLY COPY, USE OR DISCLOSE THIS MATERIAL  
WITHOUT PRIOR WRITTEN CONSENT FROM TECOMECC S.p.A.



42124- REGGIO EMILIA - ITALY

CODICE - PART NO.

**4019900049**

REV.

**1**