



VOLUMES IN l/min. AT THE INDICATED PRESSURES IN bar
 FÖRDERMENGE IN l/min. IN ABHÄNGIGKEIT ZUM DRUCK bar
 DEBIT EN l/min. AUX PRESSIONS INDIQUEES EN bar
 PORTATE IN l/min. ALLE PRESSIONI INDICATE IN bar

Ø mm	Tipo Type	VOLUMES IN l/min. AT THE INDICATED PRESSURES IN bar																		
		20	30	40	50	60	70	80	90	100	110	120	130	140	150	160	175	200	225	250
1,19	..04	4.2	5.2	5.9	6.6	7.3	7.8	8.4	8.9	9.4	9.8	10.3	10.7	11.1	11.5	11.9	12.4	13.3	14.1	14.8
1,27	..045	4.5	5.5	6.4	7.1	7.8	8.4	9	9.6	10.2	10.5	10.9	11.4	11.8	12.2	12.6	13.2	14.1	15	15.8
1,35	..05	5	6.2	7.1	8	8.7	9.4	10	10.7	11.3	11.8	12.4	12.9	13.4	13.8	14.3	14.9	16	16.9	17.9
1,40	..055	5.6	6.8	7.8	8.7	9.6	10.3	11.1	11.8	12.4	13	13.6	14.1	14.7	15.2	15.7	16.4	17.5	18.6	19.6
1,47	..06	6	7.4	8.6	9.6	10.4	11.3	12.1	12.8	13.6	14.3	14.9	15.5	16	16.7	17.2	18	19.2	20.4	21.5
1,52	..065	6.6	8	9.3	10.4	11.3	12.3	13.2	14	14.7	15.4	16.1	16.8	17.4	18	18.6	19.4	20.8	22	23.2
1,60	..07	7.1	8.6	10	11.2	12.2	13.2	14.1	15	15.8	16.6	17.3	18	18.7	19.3	20	20.9	22.3	23.7	25
1,65	..075	7.6	9.3	10.7	12	13.1	14.2	15.2	16.1	16.9	17.7	18.5	19.3	20	20.7	21.4	22.4	23.9	25.3	26.7
1,70	..08	8	9.8	11.3	12.7	14	15.1	16.1	17.1	18	18.9	19.7	20.5	21.3	22	22.8	23.8	25.5	27	28.5
1,80	..09	9.1	11.1	12.8	14.3	15.7	17	18	19.2	20.2	21.2	22.1	23	23.9	24.7	25.5	26.7	28.6	30.3	31.9
1,90	..10	10	12.3	14.2	16	17.4	18.9	20.1	21.4	22.5	23.6	24.6	25.6	26.6	27.6	28.5	29.8	31.8	33.7	35.6
2,16	..13	13.2	16.1	18.6	20.8	22.8	24.6	26.3	27.9	29.4	30.8	32.2	33.5	34.8	36	37.2	38.8	41.5	44.1	46.5
2,34	..15	15.1	18.5	21.3	23.9	26.1	28.3	30.2	32.1	33.8	35.3	36.9	38.4	39.9	41.3	42.6	44.6	47.7	50.5	53.3
2,69	..20	20.1	24.7	28.5	31.9	34.9	37.8	40.3	42.7	45.1	47.2	49.3	51.3	53.2	55.1	56.9	59.5	63.6	67.5	71.1
2,99	..25	25.2	30.9	35.7	39.8	43.6	47.1	50.4	53.4	56.4	59.1	61.8	64.3	66.7	69.1	71.3	74.6	79.8	84.6	89.2
3,30	..30	30.2	37	42.7	47.8	52.4	56.6	60.5	64.2	67.6	70.9	74	77.1	80	82.8	85.5	89.4	95.6	101	107
4,24	..50	50.5	61.8	71.4	79.8	87.4	94.5	100.9	107.1	112.9	118	124	129	133	138	143	149	160	169	178



bar



l/min.

For a correct pump use, the delivery of the nozzles has not to exceed the 95% of the pump delivery.
 Für eine korrekte Leistungsfähigkeit der Pumpe, soll die Förderleistung der Düsen nicht grösser als 95% der Pumpenleistung betragen.
 Pour une bonne utilisation de la pompe, le débit des jets ne doit pas dépasser le 95% du débit de la pompe.
 Per una corretta utilizzazione della pompa, la portata dei getti, non deve superare il 95% della portata pompa.

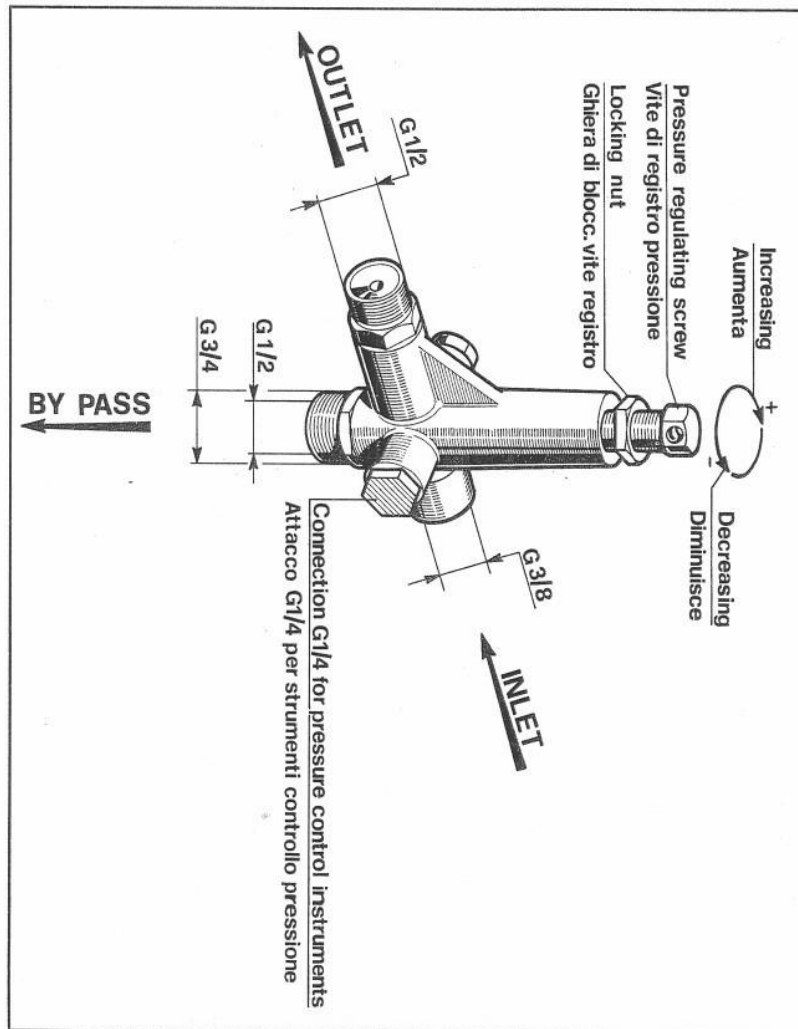
Cod. 36.3040.03 - 03/06 - 2.000 De Pietri

K3

MODEL MODELLO	VOLUME PORTATA l/min.	G.P.M. (USA)	MAX. PRESS. PRESS. MAX.
K3.1	11 ÷ 16	2.9 ÷ 4.22	1500 p.s.i.
K3.2	16 ÷ 21	4.22 ÷ 5.55	

K5

MODEL MODELLO	VOLUME PORTATA l/min.	G.P.M. (USA)	MAX. PRESS. PRESS. MAX.
K5.1	11 ÷ 16	2.9 ÷ 4.22	3000 p.s.i.
K5.2	16 ÷ 25	4.22 ÷ 6.6	
K5.3	25 ÷ 41	6.6 ÷ 10.83	

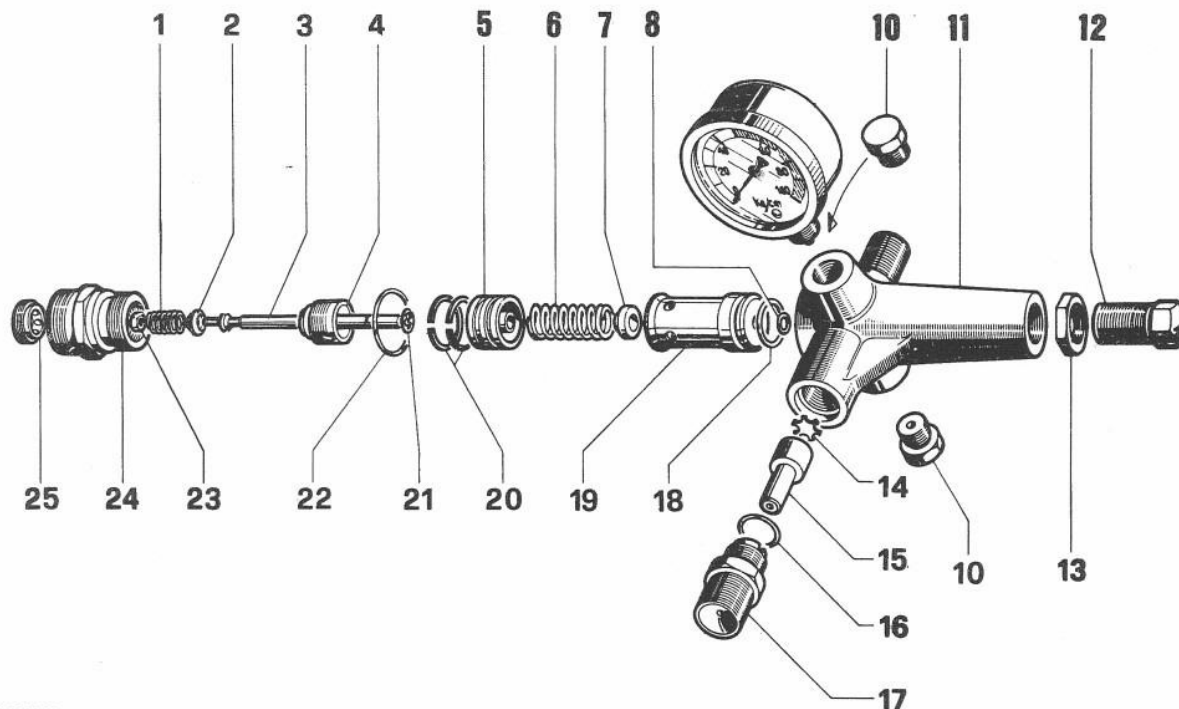


**AUTOMATIC PRESSURE REGULATORS
 REGOLATORI AUTOMATICI DI PRESSIONE**



K3 - K5





DIS. COD. 36.9506.00

KIT N.	KIT 58 - (K5) (MAINTENANCE KIT) (KIT MANUTENZIONE)	KIT 59 - (K3) (MAINTENANCE KIT) (KIT MANUTENZIONE)	KIT 60 - (K5) (COMPLETE INTERIOR KIT) (INTERNO COMPLETO)	KIT 61 - (K3) (COMPLETE INTERIOR KIT) (INTERNO COMPLETO)
Positions Included Posizioni Include	1-2-4-5-6-8-16 18-20-21-22-23-25	1-2-4-5-6-8-16 18-20-21-22-23-25	1-2-3-4-5-6-7-20 21-22-23-24-25	1-2-3-4-5-6-7-20 21-22-23-24-25
N pcs.	1	1	1	1

*** TAB. "B"

MODEL	POS.	CODE CODICE	DESCRIPTION DESCRIZIONE	N. PCS.
K 3.0 8 ÷ 11 l/min	15	36.3019.70	Ugello Ø 2	1
	17	36.3020.70	Nipplo G 1/2 con foro Ø 3	1
K 3.1 11 ÷ 16 l/min	15	36.3011.70	Ugello Ø 2,5	1
	17	36.3020.70	Nipplo G 1/2 con foro Ø 3	1
K 3.2 16 ÷ 21 l/min	15	36.3012.70	Ugello Ø 2,75	1
	17	36.3021.70	Nipplo G 1/2 con foro Ø 3,25	1

*** TAB. "A"

MODEL	POS.	CODE CODICE	DESCRIPTION DESCRIZIONE	N. PCS.
K 5.0 8 ÷ 11 l/min	15	36.3019.70	Ugello Ø 2	1
	17	36.3020.70	Nipplo G 1/2 con foro Ø 3	1
K 5.1 11 ÷ 16 l/min	15	36.3011.70	Ugello Ø 2,5	1
	17	36.3020.70	Nipplo G 1/2 con foro Ø 3	1
K 5.2 16 ÷ 25 l/min	15	36.3012.70	Ugello Ø 2,75	1
	17	36.3021.70	Nipplo G 1/2 con foro Ø 3,25	1
K 5.3 25 ÷ 41 l/min	15	36.3013.70	Ugello Ø 3	1
	17	36.3022.70	Nipplo G 1/2 con foro Ø 3,5	1

K3

POS.	CODE CODICE	DESCRIPTION DESCRIZIONE	N. PCS.
1	94.7374.00	Molla Ø 9,3×15,5	1
2	36.3008.66	Valvola conica	1
3	36.3004.66	Asta valvola	1
4	36.3034.66	Inserto per sede valvola	1
5	36.3006.70	Pistoncino di comando	1
6	94.7402.00	Molla Ø 12×36	1
7	36.3005.70	Piattello molla	1
8	90.3572.00	OR Ø 5,28×1,78 - Spec.	1
10	98.2041.00	Tappo G 1/4×9	2
11	36.3000.41	Corpo valvola	1
12	36.3001.64	Vite di regol. pressione	1
13	92.2560.00	Dado M16	1
14	36.3009.76	Valvola piana	1
15	***	See table "B" - Vedi tab. "B"	1
16	90.3833.00	OR Ø 13,95×2,62	1
17	***	See table "B" - Vedi tab. "B"	1
18	90.3835.00	OR Ø 15,08×2,62	1
19	36.3003.70	Guida asta	1
20	92.7707.00	Fascia elastica Ø 22	4
21	90.0509.00	Anello fermo assiale	1
22	90.3598.00	OR Ø 20,35×1,78	1
23	92.1925.00	Dado M4×3,2×7 INOX	1
24	36.3049.70	Sede valvola	1
25	36.3035.70	Ghiera	1

K5

POS.	CODE CODICE	DESCRIPTION DESCRIZIONE	N. PCS.
1	94.7374.00	Molla Ø 9,3×15,5	1
2	36.3008.66	Valvola conica	1
3	36.3030.66	Asta valvola	1
4	36.3034.66	Inserto per sede valvola	1
5	36.3032.70	Pistoncino di comando	1
6	94.7430.00	Molla Ø 14,5×45	1
7	36.3031.70	Piattello molla	1
8	90.3572.00	OR Ø 5,28×1,78 - Spec.	1
10	98.2041.00	Tappo G 1/4×9	2
11	36.3028.41	Corpo valvola	1
12	36.3001.64	Vite di regol. pressione	1
13	92.2560.00	Dado M16	1
14	36.3009.76	Valvola piana	1
15	***	See table "A" - Vedi Tab. "A"	1
16	90.3833.00	OR Ø 13,95×2,62	1
17	***	See table "A" - Vedi Tab. "A"	1
18	90.3845.00	OR Ø 18,72×2,62	1
19	36.3029.70	Guida asta	1
20	92.7722.00	Fascia elastica Ø 27	4
21	90.0509.00	Anello fermo assiale	1
22	90.3859.00	OR Ø 25,07×2,62	1
23	92.1925.00	Dado M4×3,2×7 - INOX	1
24	36.3050.70	Sede valvola	1
25	36.3035.70	Ghiera	1