



2012 CATALOG

High Pressure
Water Pump Parts

Accessories

Control Guns

Fittings

Rigid Lances

Flex Lances

Hoses

Nozzles

Pump Parts

**“NLB TYPE”
FLUID ENDS**



Salomon Jetting Parts B.V.

Hoeksedijk 109, 3299 AE Maasdam, The Netherlands

Tel: +31(0)88 126 1900 Fax: +31(0)88 126 1999

e-mail: info@salomonjettingparts.com

web: www.salomonjettingparts.com

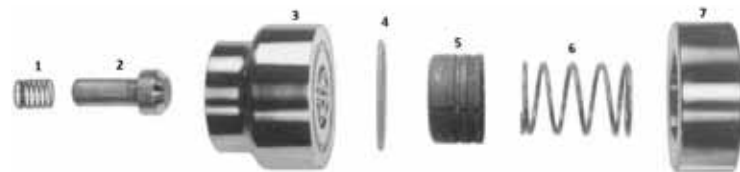
"NLB TYPE" PUMP PARTS

FLUID END PUMP PLUNGER ASSEMBLY REPLACEMENT PARTS



ITEM DESCRIPTION	0.875	1	1.125
(6) PLUNGER, COMOLOY	25-001-312	25-001-313	25-001-314
NLB EQUIVALENT NUMBER	G-353-07	G-353-010	G-353-11
(1) GLAND, PACKING	25-001-231	25-001-231	25-001-231
NLB EQUIVALENT NUMBER	G-338	G-338	G-338
(2) SEAL, CARRIER	25-001-232	25-001-233	25-001-234
NLB EQUIVALENT NUMBER	G-256-07	G-256-10	G-256-11
(3) PACKING SET	25-001-123	25-001-124	25-001-125
NLB EQUIVALENT NUMBER	1650	1651	1652
(4) BUSHING, THROAT	25-001-235	25-001-236	25-001-237
NLB EQUIVALENT NUMBER	G-641-07	G-341-10	G-341-11
(5) SPRING, PACKING	25-001-510	25-001-510	25-001-510
NLB EQUIVALENT NUMBER	G-334-1	G-334-1	G-334-1

ONE PIECE FLUID END SUCTION/DISCHARGE VALVE ASSEMBLY REPLACEMENT PARTS



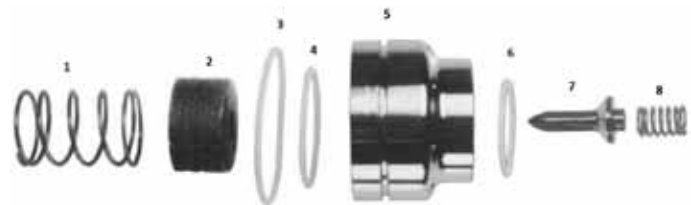
ITEM DESCRIPTION	PART ID	NLB TYPE ID
(1) SPRING, DISCHARGE VALVE	25-001-527	G-535
(2) VALVE, DISCHARGE	25-001-427	G-521
(3) SEAT, SUCTION/DISCHARGE VALVE	25-001-430	G-784
(4) O-RING, SUCTION SIDE	30-010-229	AA-1587
(5) VALVE, SUCTION	25-001-428	G-520
(6) SPRING, SUCTION VALVE	25-001-532	G-534
(7) SLEEVE, UPPER	25-001-429	G-385

10150 & 10250 FLUID END PLUNGER ASSEMBLY REPLACEMENT PARTS



ITEM DESCRIPTION	PART NUMBER / DIAMETER			
	1.125	1.25	1.375	1.5
(1) PLUNGER 17-4 SS	25-001-315	25-001-316	25-001-317	25-001-318
EQUIVALENT NLB PART #	N/A	N/A	N/A	N/A
(1) PLUNGER COLMONOY	25-001-308	25-001-309	25-001-310	25-001-311
EQUIVALENT NLB PART #	N/A	L-353-12	L-353-13	L-353-14
(2) PACKING SPRING	25-001-502	25-001-502	25-001-502	25-001-502
EQUIVALENT NLB PART #	L-334-1	L-334-1	L-334-1	L-334-1
(3) THROAT BUSHING	25-001-216	25-001-217	25-001-218	25-001-219
EQUIVALENT NLB PART #	N/A	L-341-12	L-341-13	L-341-14
(4) PACKING SET TEFLON	25-001-104	25-001-105	25-001-106	25-001-107
EQUIVALENT NLB PART #	N/A	N/A	N/A	N/A
(5) PACKING SET	25-001-100	25-001-101	25-001-102	25-001-103
EQUIVALENT NLB PART #	N/A	1606	1611	1612
(6) BACKUP RING	25-001-220	25-001-221	25-001-222	25-001-223
EQUIVALENT NLB PART #	N/A	L-339-12	L-339-13	L-339-14

FLUID END SUCTION/DISCHARGE PUMP VALVE ASSEMBLY

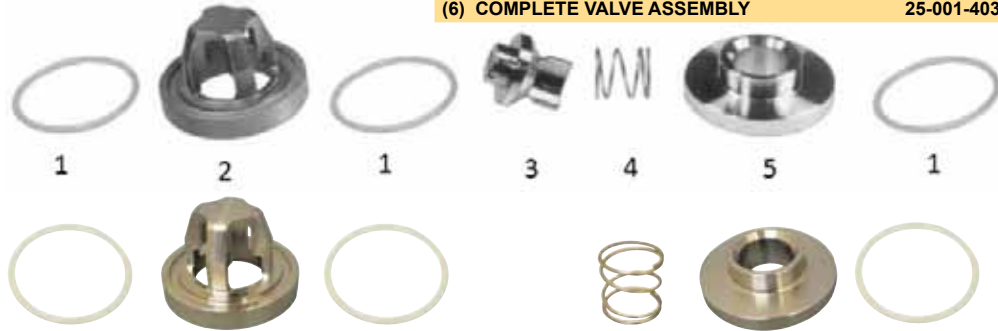


ITEM DESCRIPTION	PART ID	NLB TYPE ID
(1) SPRING, SUCTION VALVE	25-001-511	G-334
(2) VALVE, SUCTION	25-001-425	G-320
(3) O-RING VALVE SEAT OD	30-010-235	AA20-1120
(4) O-RING SUCTION FACE	30-010-229	AA20-1110
(5) SEAT, VALVE	25-001-426	G-384
(6) O-RING DISCHARGE FACE	30-010-225	AA20-1130
(7) VALVE, DISCHARGE	25-001-418	G-321
(8) SPRING, DISCHARGE VALVE	25-001-518	G-335

10150 & 10250 FLUID END SUCTION/DISCHARGE VALVE ASSEMBLY REPLACEMENT PARTS



Complete Assembly
25-001-403
NLB TYPE
L-901-WG



ITEM DESCRIPTION	QTY	PART #	NLB TYPE
(2) CAGE, SUCTION/DISCHARGE	1	25-001-402	L-322A/333A
(1) O-RING, VALVE	3	30-010-229	AA-8020
(4) SPRING, VALVE	1	25-001-500	L-334/335
(3) VALVE	1	25-001-400	L-320A321
(5) SEAT, VALVE	1	25-001-401	L-322A/323A
(6) COMPLETE VALVE ASSEMBLY		25-001-403	L-901-WG

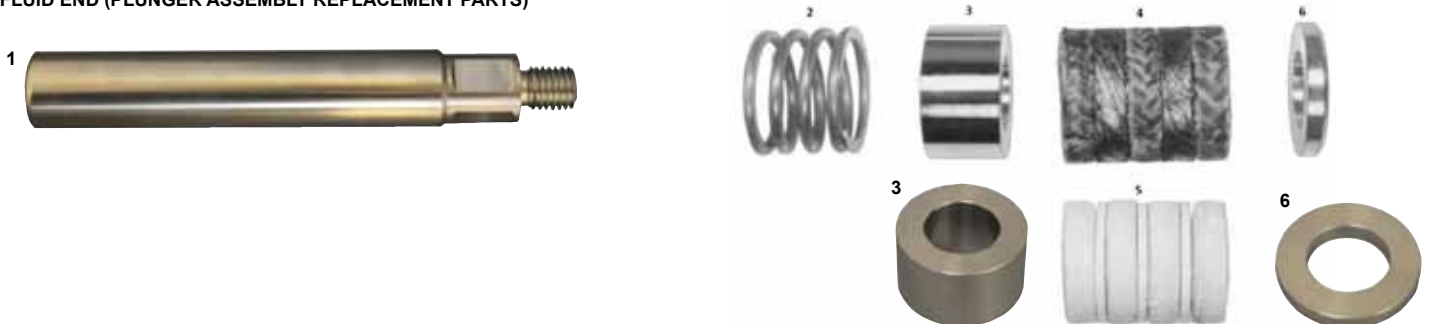
FLUID END PUMP PLUNGER ASSEMBLY REPLACEMENT PARTS



#25-001-123

ITEM DESCRIPTION	0.875	1	1.125
(1) PLUNGER, COMONLY	25-001-312	25-001-313	25-001-314
NLB EQUIVALENT PART ID	G-353-07	G-353-10	G-353-11
(2) SPRING, PACKING	25-001-519	25-001-519	25-001-519
NLB EQUIVALENT PART ID	G-734-1	G-734-1	G-734-1
(3) BUSHING, THROAT	25-001-230	25-001-230	25-001-230
NLB EQUIVALENT PART ID	G-741	G-741	G-741
(4) ADAPTER, MALE	25-001-238	25-001-239	25-001-240
NLB EQUIVALENT PART ID	G-742-07	G-742-10	G-742-11
(5) PACKING SET	25-001-123	25-001-124	25-001-125
NLB EQUIVALENT PART ID	1660	1661	1662
(6) SEAL, CARRIER	25-001-241	25-001-242	25-001-243
NLB EQUIVALENT PART ID	G-756-07	G-756-10	G-756-11

1012 FLUID END (PLUNGER ASSEMBLY REPLACEMENT PARTS)



	0.875	1	1.125	1.25
(1) PLUNGER 17-4 S.S.	25-001-300	25-001-301	25-001-302	25-001-303
(1) PLUNGER COLMONOY	25-001-304	25-001-305	25-001-306	25-001-307
(EQUIVALENT NLB AND GDWJ PART#)	(NLB TYPE N-353-07)	(NLB TYPE N-353-10)	(NLB TYPE N-353-11)	(NLB TYPE N-353-12)
(2) PACKING SPRING	25-001-533	25-001-533	25-001-533	25-001-533
(EQUIVALENT NLB AND GDWJ PART#)	(NLB TYPE: N-334-1)	(NLB TYPE: N-334-1)	(NLB TYPE: N-334-1)	(NLB TYPE: N-334-1)
(3) THROAT BUSHING	25-001-200	25-001-201	25-001-202	25-001-203
(EQUIVALENT NLB AND GDWJ PART#)	(NLB TYPE N-341-07)	(NLB TYPE N-341-10)	(NLB TYPE N-341-11)	(NLB TYPE N-341-12)
(4) PACKING SET	25-001-108	25-001-109	25-001-110	25-001-111
(EQUIVALENT NLB AND GDWJ PART#)	(NLB TYPE 1608)	(NLB TYPE 1609)	(NLB TYPE 1610)	(NLB TYPE 1624)
(5) PACKING SET TEFLON	25-001-112	25-001-113	25-001-114	25-001-115
(6) BACKUP RING	25-001-204	25-001-205	25-001-206	25-001-207
(EQUIVALENT NLB AND GDWJ PART#)	(NLB TYPE N-339-07Z)	(NLB TYPE N-339-10)	(NLB TYPE N-339-11)	(NLB TYPE N-339-12)

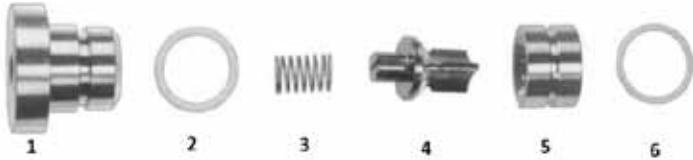
PUMP PARTS

1012 ONE PIECE FLUID END (SUCTION VALVE ASSEMBLY REPLACEMENT PARTS)



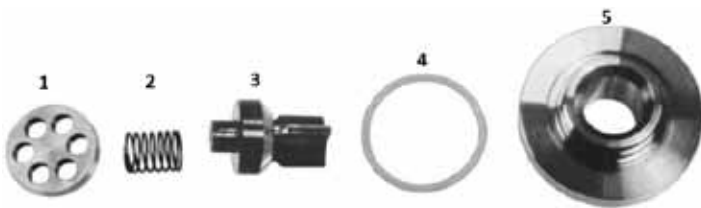
ITEM DESCRIPTION	QTY	APS PART #	EQUIVALENT NLB PART #
(1) O-RING, SUCTION VALVE SEAT	1	30-010-225	AA-1900
(2) SEAT, SUCTION VALVE	1	25-001-405	N-322
(3) SUCTION VALVE	1	25-001-404	N-320
(4) SPRING, SUCTION VALVE	1	25-001-501	N-334
(5) STOP, SUCTION VALVE	1	25-001-406	N-369

1012 ONE PIECE FLUID END (DISCHARGE VALVE ASSEMBLY REPLACEMENT PARTS)



ITEM DESCRIPTION	QTY	APS PART #	EQUIVALENT NLB PART #
(1) STOP, DISCHARGE VALVE	1	25-001-407	N-370
(2) O-RING, DISCHARGE SEAT	1	30-010-215	AA-5020
(3) SPRING, DISCHARGE VALVE	1	25-001-535	N-335
(4) DISCHARGE VALVE	1	25-001-410	N-321
(5) SEAT, DISCHARGE VALVE	1	25-001-411	N-323
(6) O-RING, DISCHARGE SEAT	1	30-010-216	AA-1890

1012 THREE PIECE FLUID END (SUCTION/DISCHARGE VALVE ASSMBLY REPLACEMENT PARTS)



ITEM DESCRIPTION	QTY	APS PART #	EQUIVALENT NLB PART #
(1) STOP, SUCTION VALVE	1	25-001-413	N-369
(2) SPRING, VALVE	1	25-001-534	N-334
(3) VALVE	1	25-001-415	N-320
(4) O-RING, VALVE SEAT	2	30-010-225	AA-8390
(5) VALVE SEAT, SUCTION/DISCHARGE	1	25-001-417	NC-322/323