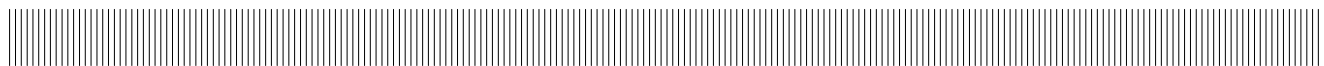


	EQUIPAGGIAMENTI TECNICI LAVAGGIO	UGELLO TRIPLO THREE WAY NOZZLE GS3	①	4
			Ⓜ	

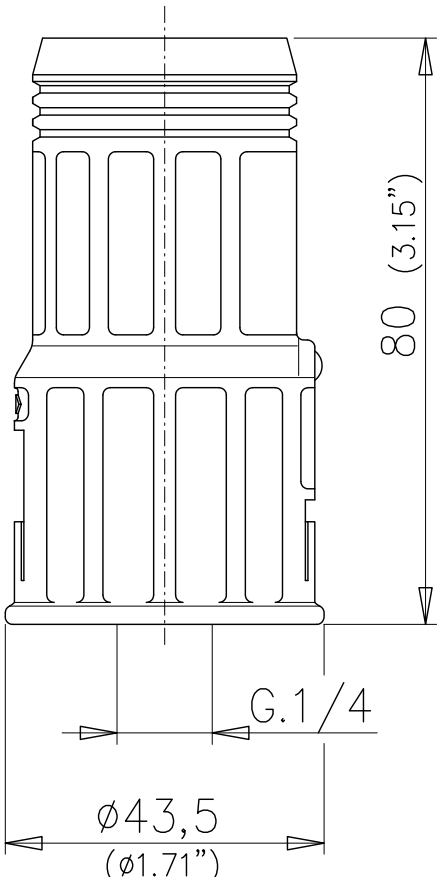


SPECIFICHE TECNICHE
SPECIFICATIONS

- PRESSIONE NOMINALE RATED PRESSURE	220 bar – 22 MPa (3200 psi)
- PRESSIONE CONSENTITA PERMISSIBLE PRESSURE	250 bar – 25 MPa (3650 psi)
- PORTATA NOMINALE RATED FLOW	40 l/min (10.5 USG p.m.)
- TEMPERATURA MASSIMA MAX WORKING TEMPERATURE	80° C (175 °F)
- UGELLO BASSA PRESSIONE LOW PRESSURE NOZZLE	40–20

MISURE D'INGOMBRO
OVERALL DIMENSIONS

CODICE CODE	FATTORE DI PORTATA CAPACITY SIZE
25.0800.45	F.P. 045
25.0800.55	F.P. 055
25.0800.60	F.P. 06



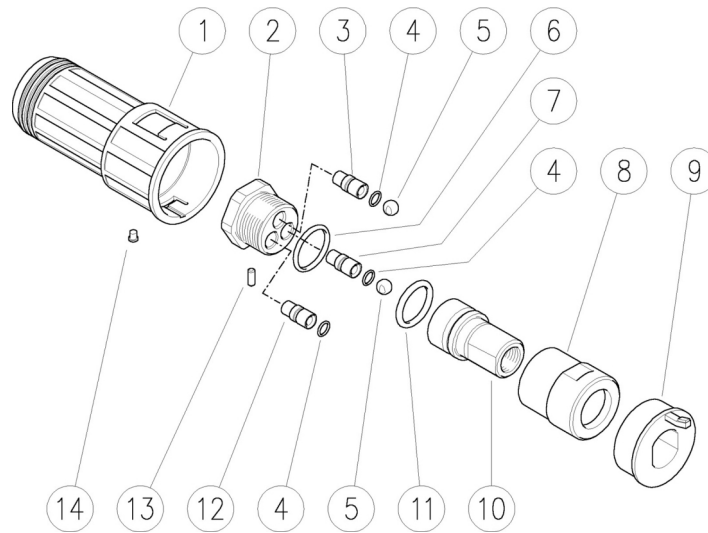
Technical drawing of the triple nozzle showing dimensions:

- Height: 80 (3.15")
- Diameter: $\varnothing 43,5$ ($\varnothing 1.71$ ")
- Thread: G.1/4

25.0800.45 GS3-045 test.tripla+ug. G1/4F

25.0800.60 GS3-06 test.tripla+ug. G1/4 F

25.0800.55 GS3-055 test.tripla+ug. G1/4F



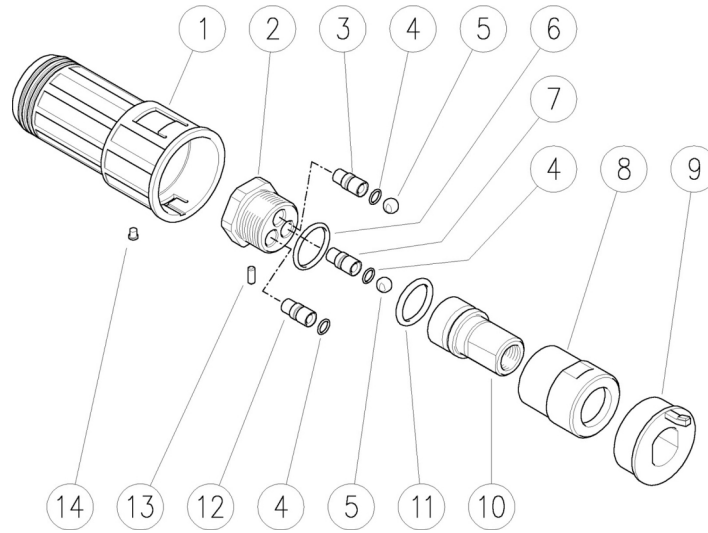
Pos.	Codice	Descrizione	Q.tà	K1	K2	K3	K4		Pos.	Codice	Descrizione	Q.tà	K1	K2	K3	K4	
1	25.0808.84	Astuccio	1					3	8	25.0811.31	Corpo per distributore	1					3
2	25.0810.31	Portaugello	1					3	9	25.0809.84	Tappo manopola	1					3
3	25.0804.31	Ugello diritto 045 (1)	1					3	10	25.0812.31	Distributore rot. di sfere G1/4F	1					1
3	25.0803.31	Ugello diritto 055 (2)	1					3	11	10.3181.50	An.OR 2,62x17,2 mm	1	•				25
3	25.0802.31	Ugello diritto 06 (3)	1					3	12	25.0807.51	Ugello 25° 045 d.7 mm ott. (1)	1					3
4	10.3002.01	An.OR 1x5 mm Ni 85	3	•				10	12	25.0806.51	Ugello 25° 055 d.7 mm ott. (2)	1					3
5	14.7421.50	Sfera 1/4" inox	2	•				10	12	25.0805.51	Ugello 25° 060 d.7 mm ott. (3)	1					3
6	10.3072.50	An.OR 1,78x21,95 mm	1	•				10	13	15.1018.00	Spina cil. 3x8 mm inox	1					10
7	25.0801.31	Ugello 40° 20 d.7 mm ott.	1					3	14	15.2000.45	Chiodo 045 blu (1)	1					10

Kit	Codice	Descrizione	Q.tà
K1	25.0815.24	Kit ric. GS3 1x4pz.	1

(1) 25.0800.45 (2) 25.0800.55 (3) 25.0800.60

25.0800.45 GS3-045 N.hold.+3x nzl 1/4F Bsp
 25.0800.55 GS3-055 N.hold.+3x nzl 1/4F Bsp

25.0800.60 GS3-06 N.hold.+3x nzl 1/4F Bsp



Pos.	P/N	Description	Q.ty	K1	K2	K3	K4		Pos.	P/N	Description	Q.ty	K1	K2	K3	K4	
1	25.0808.84	Case	1					3	8	25.0811.31	Distributor housing	1					3
2	25.0810.31	Nozzle holder	1					3	9	25.0809.84	Knob plug	1					3
3	25.0804.31	Straight nozzle, 045 (1)	1					3	10	25.0812.31	Rotating ball distributor, 1/4F Bsp	1					1
3	25.0803.31	Straight nozzle, 055 (2)	1					3	11	10.3181.50	O-ring, 2,62x17,2 mm	1	•				25
3	25.0802.31	Straight nozzle, 06 (3)	1					3	12	25.0807.51	Nozzle, 25° 045 d.7 mm brass (1)	1					3
4	10.3002.01	O-ring, 1x5 mm Ni 85	3	•				10	12	25.0806.51	Nozzle, 25° 055 d.7 mm brass (2)	1					3
5	14.7421.50	Ball, 1/4" Sst.	2	•				10	12	25.0805.51	Nozzle, 25° 060 d.7 mm brass (3)	1					3
6	10.3072.50	O-ring, 1,78x21,95 mm	1	•				10	13	15.1018.00	Parallel pin, 3x8 mm Sst.	1					10
7	25.0801.31	Nozzle, 40° 20 d.7 mm brass	1					3	14	15.2000.45	Stud, 045 blue (1)	1					10

Kit	P/N	Description	
K1	25.0815.24	Spares kit -GS3 1x4pcs.	1

(1) 25.0800.45 (2) 25.0800.55 (3) 25.0800.60



P.A. S.p.A.
Via Milano, 13
42048 Rubiera, Reggio Emilia - Italy
Tel +39.0522.623611
Fax +39.0522.629600
info@pa-etl.it

www.pa-etl.it



COMPANY WITH QUALITY MANAGEMENT
SYSTEM CERTIFIED BY DNV
= ISO 9001 =