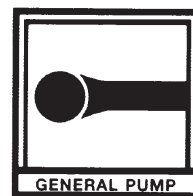


# RMAX 400



## OPERATING INSTRUCTIONS - MODE D'EMPLOI - BEDIENUNGSANLEITUNG INSTRUCCIONES PARA EL USO - ISTRUZIONI D'USO



**ORD. CODE: RMAX401  
RMAX403**

### SPECIFICATION

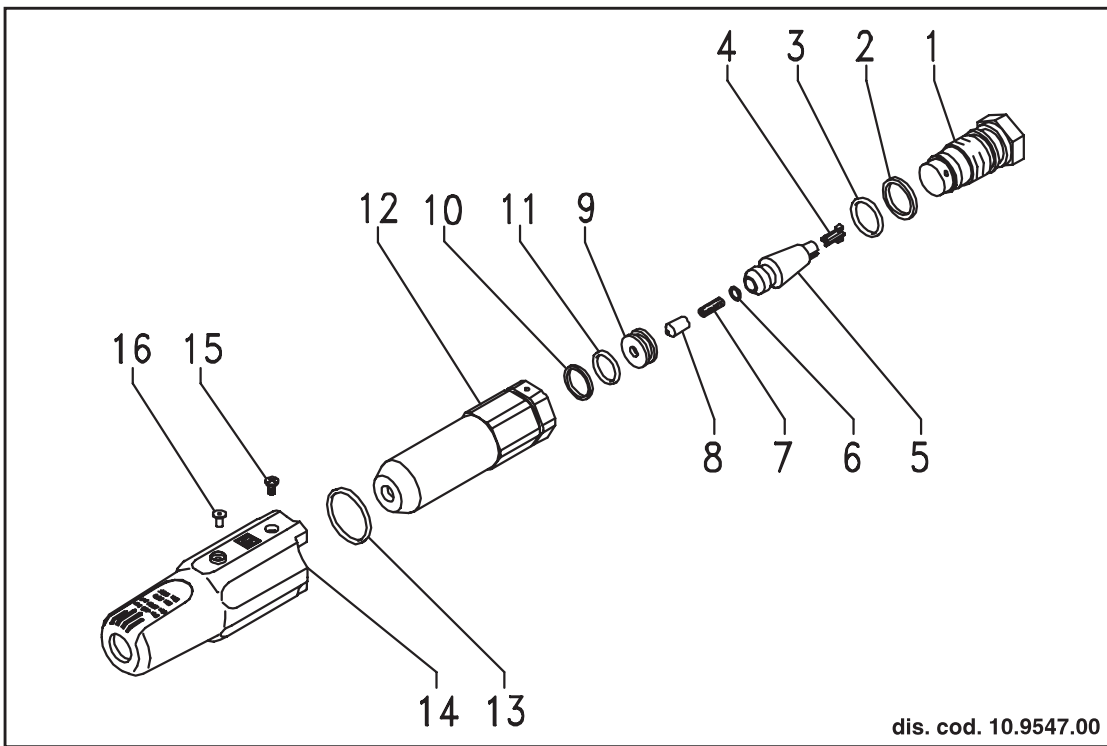
MAX. INLET PRESSURE PRESSIONE MAX. D'ALIMENT.		MAX. VOLUME PORTATA MASSIMA		MAX. INLET WATER TEMPER. TEMP. MAX. ACOUA IN ALIM.		WEIGHT PESO		LENGTH LUNGHEZZA	
bar	P.S.I.	l/min	G.P.M. (USA)	°C	°F	Kg.	lbs.	mm.	in.
<b>400</b>	<b>5800</b>	<b>25</b>	<b>6.6</b>	<b>80</b>	<b>176</b>	<b>0.34</b>	<b>0.75</b>	<b>108.5</b>	<b>4.27</b>

### NOZZLE CHART - TABLEAU DES BUSES - DÜSENTABELLE TABLA DE BOQUILLAS - TABELLA UGELLI

TYPE TIPO	Nozzle-Ugello Color Cod. Codice Colore	100	125	150	175	200	225	250	275	300	325	350	375	400	bar
		1450	1812.5	2175	2537.5	2900	3262.5	3625	3987.5	4350	4712.5	5075	5437.5	5800	P.S.I.
<b>RMAX401</b>	<b>140</b>	8.8	9.8	10.8	11.7	12.5	13.3	14.0	14.7	15.3	15.9	16.6	17.1	17.7	L/min.
		2.3	2.5	2.8	3	3.3	3.5	3.7	3.9	4.0	4.2	4.4	4.5	4.7	G.P.M.
<b>RMAX403</b>	<b>160</b>	12.6	14.0	15.3	16.6	17.7	18.8	19.8	20.9	21.7	22.6	23.4	24.3	25.1	L/min.
		3.3	3.7	4.0	4.4	4.7	4.9	5.2	5.5	5.7	6.0	6.2	6.4	6.6	G.P.M.

PRESSURE AT THE NOZZLE  
PRESSIONE ALL'UGELLO

VOLUME  
PORTATA



dis. cod. 10.9547.00

POS.	CODE CODICE	N. PCS.
1	TAB. "A"	1
2	90.5085.00	1
3	90.3591.00	1
4	10.0453.51	1
5	10.0564.02	1
6	90.3574.00	1
7	TAB. "A"	1
8	10.0456.09	1
9	10.0606.02	1
10	90.5075.00	1
11	90.3589.00	1
12	10.0604.70	1
13	90.3602.00	1
14	10.0602.51	1
15	99.0702.00	1
16	TAB. "A"	1

**TAB. "A"**

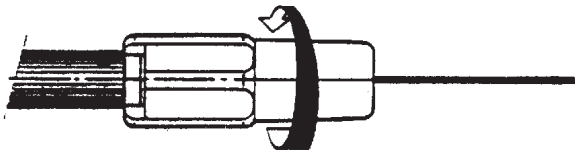
TYPE - TIPO	POS.	CODE - CODICE	DESCRIPTION - DESCRIZIONE	N. PCS.
<b>RMAX401</b>	1	10.0605.70	Nipplo convogliatore n. 2 fori Ø 1.4	1
	7	98.6674.00	Uaello cod. 140 col. rosso	1
	16	98.1905.00	Tappo col. rosso	1
<b>RMAX403</b>	1	10.0609.70	Nipplo convogliatore n. 2 fori Ø 2.1	1
	7	98.6780.00	Uaello cod. 160 col. nero	1
	16	98.1909.00	Tappo col. nero	1

**HOW TO USE THE "RMAX400"**  
**COME USARE IL "RMAX 400"**

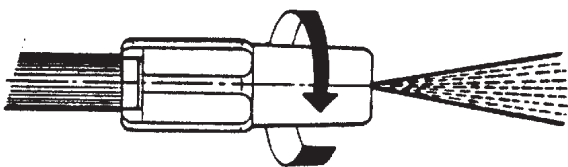
**TAV. 1**

Regulation of the rotation iet  
---  
Regolazione della velocità  
di rotazione del getto

①



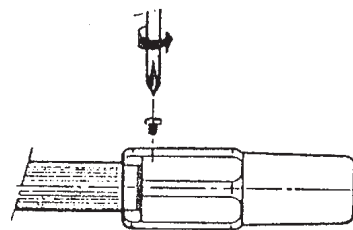
②



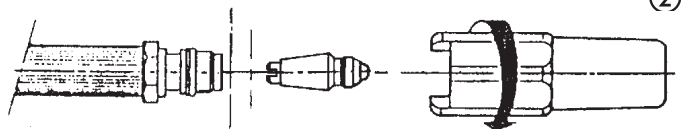
**CLEANING AND CHANGING NOZZLE**  
**PULIZIA E SOSTITUZIONE UGELLO**

**TAV. 2**

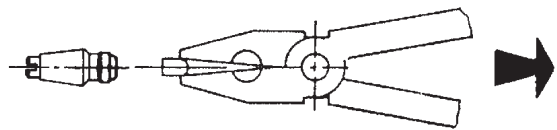
①



②



③



④

